



MANI PolyPropylene Suture

(7-0 & 6-0 for Oculoplastic surgery)

New line up for Oculoplastic surgery
Easy to recognize during surgery,
Difficult to recognize after surgery



Why blue Polypropylene?

During

- **Black color** suture is hard to distinguish with eyelash during surgery.
- **Blue color** Polypropylene is easier to recognize

Post

- **Blue color** suture is more inconspicuous than black color when it is buried under the skin. **Polypropylene can last longer in body**

Order No.	Suture description		Needle description			
	Type	Length	Type	Length	Curve	Armes
3306S	7-0 Poly-Propylene Blue Mono	45cm	Lancet	8.0mm	3/8	Single
3307S	7-0 Poly-Propylene Blue Mono	45cm	Lancet	11.0mm	3/8	Single
3309	7-0 Poly-Propylene Blue Mono	30cm	Cut Taper	15.0mm	3/8	Double
3310S	6-0 Poly-Propylene Blue Mono	45cm	Lancet	11.0mm	3/8	Single
3312	6-0 Poly-Propylene Blue Mono	30cm	Cut Taper	15.0mm	3/8	Double
3313	7-0 Poly-Propylene Blue Mono	60cm	Cut Taper	9.0mm	3/8	Double
3313S	7-0 Poly-Propylene Blue Mono	50cm	Cut Taper	9.0mm	3/8	Single
3314	7-0 Poly-Propylene Blue Mono	60cm	Cut Taper	11.0mm	3/8	Double
3314S	7-0 Poly-Propylene Blue Mono	50cm	Cut Taper	11.0mm	3/8	Single
3316	6-0 Poly-Propylene Blue Mono	60cm	Cut Taper	9.0mm	3/8	Double
3316S	6-0 Poly-Propylene Blue Mono	50cm	Cut Taper	9.0mm	3/8	Single
3317	6-0 Poly-Propylene Blue Mono	60cm	Cut Taper	11.0mm	3/8	Double
3317S	6-0 Poly-Propylene Blue Mono	50cm	Cut Taper	11.0mm	3/8	Single



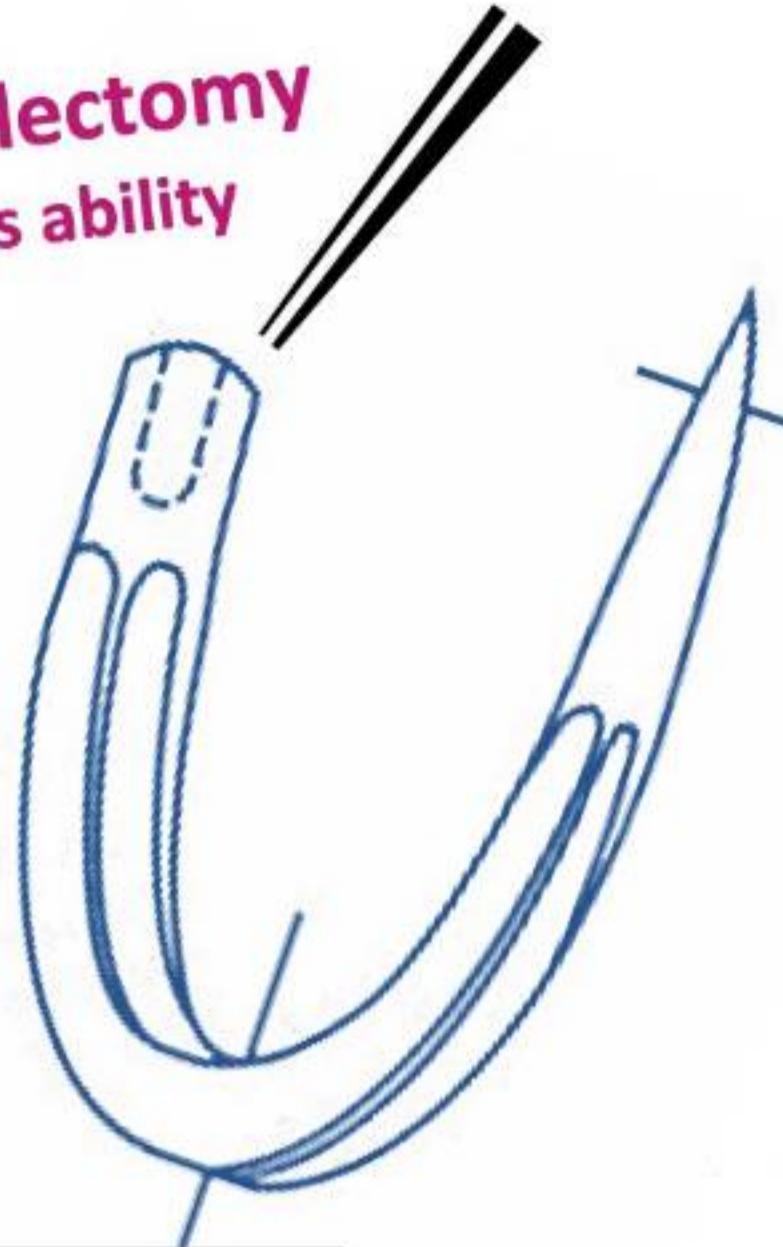
8-3 Kiyohara Industrial Park, Utsunomiya Tochigi 321-3231 JAPAN
 MANI THAILAND : manithailand@ms.mani.co.jp tel: +669 5570 5986



MANI Nylon Suture

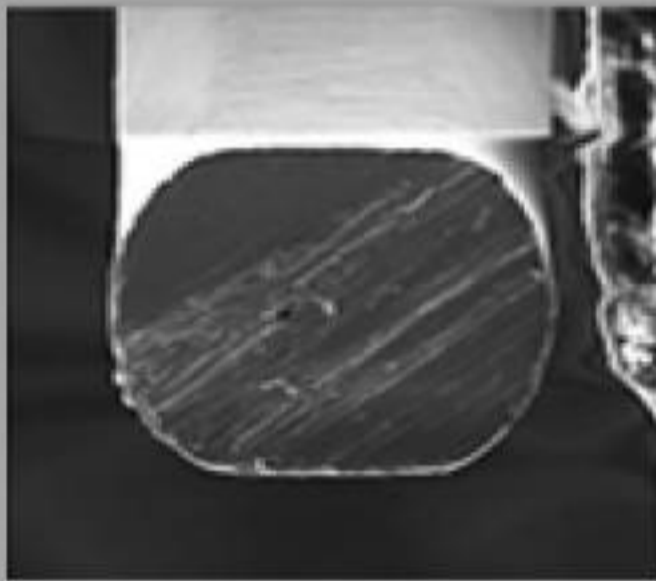
(10-0 Nylon for Trabeculectomy)

New line up for Trabeculectomy
Taper Point needle acquires ability to pierce Sclera

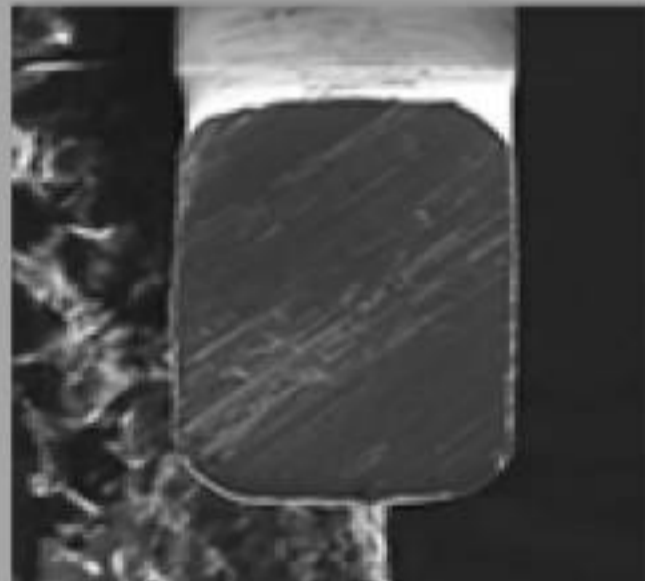


Rectangular body

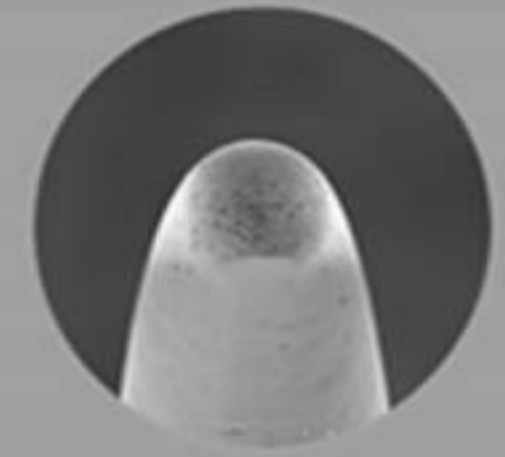
provides stiffness to suture hard sclera tissue.
 The bending strength is 1.6 higher than conventional type.



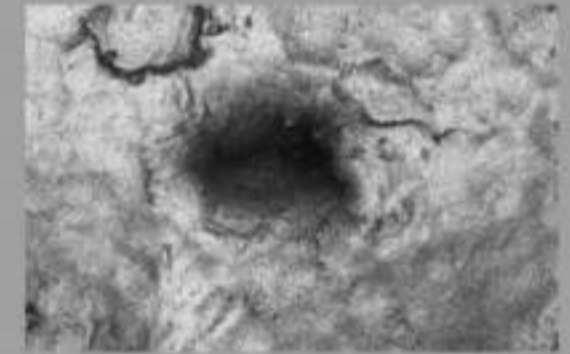
Conventional type



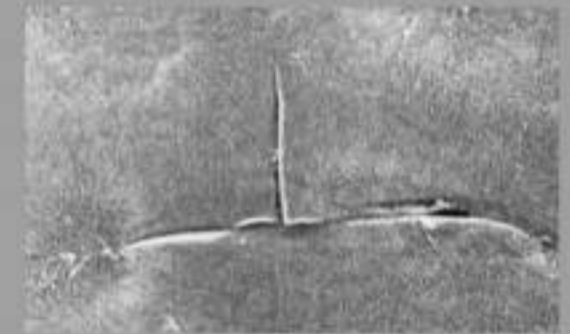
New type (Rectangular body)



Taper point tip creates smaller trauma than Trape Spatura needle.
 Helpful for keeping in good condition of Conjunctiva.



Trauma of Taper Point Needle on test



Trauma of Trape Spatura Needle on test material

Main Application

- Suturing Conjunctiva & Sclera for Trabeculectomy
- Post operative care: Suturing the scleral flap through conjunctiva for treatment of excess filtration

Order No.	Suture description		Needle description			
	Type	Length	Type	Length	Curve	Armed
1430	10-0 Nylon Black Mono	30cm	Taper Point Rectangular Body	6.5mm	3/8	Double
1430S	10-0 Nylon Black Mono	15cm	Taper Point Rectangular Body	6.5mm	3/8	Single
1432	10-0 Nylon Black Mono	30cm	Taper Point Rectangular Body	6.0mm	7/16	Double
1433	10-0 Nylon Black Mono	30cm	Taper Point Rectangular Body	6.0mm	3/8	Double

